

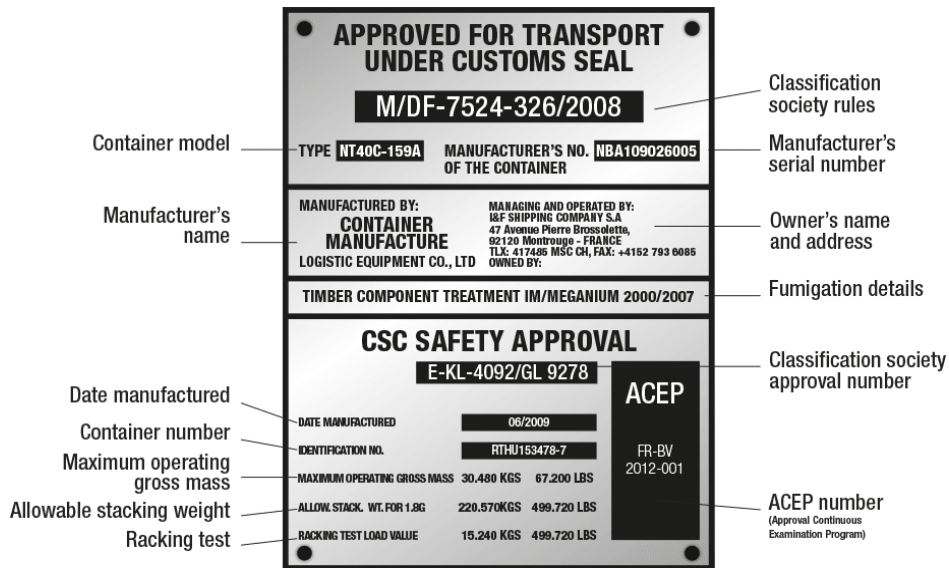
Ex-works sea freight container guide



www.ex-worksph.com



Container's identity plate and safety approval data



In 1995 there was an ISO agreement concerning container marking codes to depict the length, height and type of container in an easy to read sequence. This sequence is composed of four letters or digits that commonly appear right under the container identification sequence. The first character is related to the length of the container and the second character is relative to its height. The remaining two elements of the sequence identify the container type and characteristics.

LENGTH	HEIGHT	TYPE
2 – 20 Feet	2 – 8 Feet 6 Inches	G1 – General Purpose
4 – 40 Feet	5 – 9 Feet 6 Inches (HC)	R1 - Refrigerated
L – 45 Feet		U1 – Open Top
M – 48 Feet		P1 – Platform
		T1 - Tank

The owner prefix (BIC code): three capital letters of the Latin alphabet to indicate the owner or principal operator of the container, the equipment category identifier: one capital letter as follows:

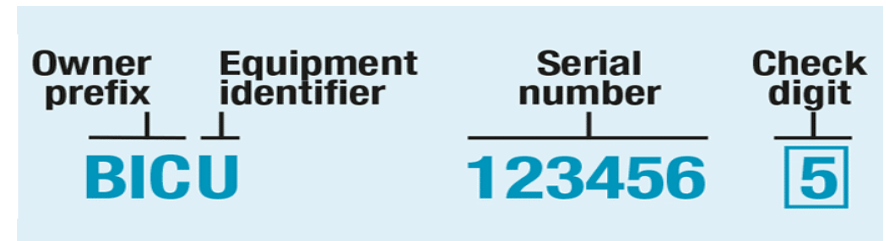
-U for all freight containers,

-J for detachable freight container-related equipment,

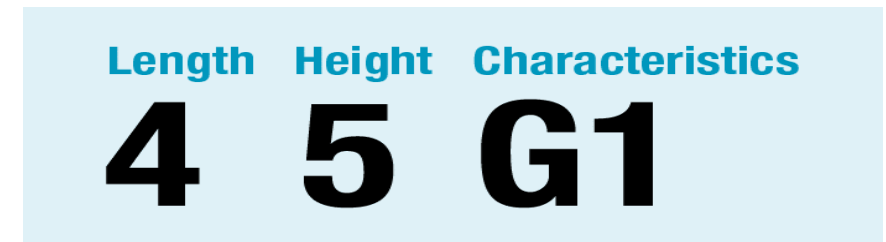
-Z for trailers and chassis,

The serial number: six Arabic numerals, left at owner's or operator's option,

The check digit: one Arabic numeral providing a means of validating the recording and transmission accuracies of the owner code and serial number.



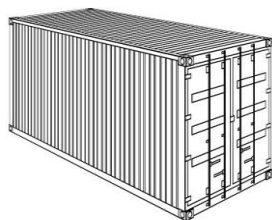
The letters and numerals of the owner code, equipment category identifier, serial number and check digit shall be not less than 100 mm (4 in) high. All characters shall be of proportionate width and thickness, they shall be durable and in a colour contrasting with that of the container.



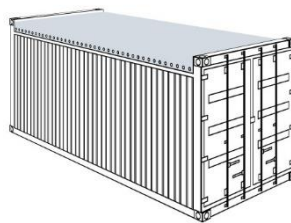
Container Type	General Use	Size (Ft)	Weight (Kg/Lbs)			Internal Dimensions (mm/Ft/in)			Door Opening (mm/ft/in)		Vol (M3/F3)
			Max. Gross Wt.	Tare Wt.	Max. Payload.	Length	Width	Height	Width	Height	
Dry Van General Purpose	Suitable for commodities in bundles, cartons, boxes, loose cargo, bulk, furniture, etc.	20'	30,480 67,200	2,250 4,960	28,230 62,240	5,902 19'4 23/64"	2,350 7'8 33/64"	2,392 7'10 11/64"	2,341 7'8 11/64"	2,280 7'5 49/64"	33.2 1,172
		40'	32,500 71,650	3,800 8,380	28,700 63,270	12,032 39'5 45/64"	2,350 7'8 33/64"	2,390 7'10 11/64"	2,341 7'8 11/64"	2,280 7'5 49/64"	67.6 2,387
High Cube	Same as dry containers, but higher volume capacity.	40'	32,500 71,650	3,920 8,640	28,580 63,010	12,032 39'5 45/64"	2,350 7'8 33/64"	2,698 8'10 1/8"	2,338 7'8 1/64"	2,585 8'5 49/64"	76.2 2,690
		45'	30,480 67,200	4,800 10,580	25,680 56,620	13,556 44'5 11/16"	2,350 8' 33/64"	2,698 10' 7/32"	2,338 7'8 1/64"	2,585 8'5 49/64"	86,0 3,040
		45'	32,500 71,650	4,800 10,580	27,700 61,290	13,556 44'5 11/16"	2,350 8' 33/64"	2,698 10' 7/32"	2,338 7'8 1/64"	2,585 8'5 49/64"	86,0 3,040
Open Top	Suitable for high large piece cargo that cannot be loaded through container doors such as machinery, sheet glass, marble, building materials and lumber.	20'	30,480 67,200	2,250 4,960	28,230 62,240	5,894 19'4 1/8"	2,344 7'8 3/16"	2,347 7'8 3/8"	2,336 7'7 15/16"	2,275 7'5 1/2"	31,5 1,112
		40'	30,480 67,200	3,800 8,158	26,680 59,049	12,027 39'5 1/2"	2,344 7'8 3/16"	2,347 7'8 3/8"	2,336 7'7 15/16"	2,275 7'5 1/2"	67,0 2,365.6
Flat Rack Flush Folding	Used for carrying awkward and oversize loads such as machinery, cables, drums, sheet and steel coils, heavy vehicles, timber and forest products.	20'	34,000 74,950	2,890 6,370	31,110 68,580	5,638 18'6"	2,194 7'2 1/10"	2,233 7'3 9/10"			
		40'	45,000 99,202	4,950 11,683	40,050 87,518	11,776 38'7 9/10"	2,374 7'9 3/10"	1,955 6'5"			
		40'	50,000 110,230	5,000 11,023	45,000 99,207	11,652 38'2 7/10"	2,374 7'9 3/10"	1,959 6'5 1/10"			
Reefer	Used for chilled and frozen cargo. Suitable for transporting perishable, as vegetables, fruit, meat, etc.	20'	30,480 67,200	4,580 10,090	25,900 57,100	11,550 37'10 1/2"	2,280 89.7"	2,092 88.3" To Loadline	2,280 87.7"	2,197 86.5"	55.3 1,935 To Loadline
		40'	34,000 74,960	4,900 10,800	29,100 64,160	11,590 38' 13/64"	2,286 76"	2,401 8'10 1/2" To Loadline	2,294 7'6 1/16"	2,500 8'2 3/4"	67.5 2,384 To Loadline



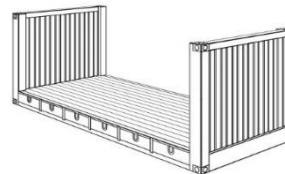
Dry Van



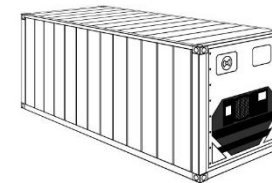
High-Cube



Open Top



Flat Rack



Reefer



Reefer High Cube