

Ex-works air freight container guide



www.ex-worksph.com



Identifying a Unit Load Device (ULD)

Each Aircraft Unit Load Device (ULD) is identified by its ULD code. This code is a unique combination of letters and numbers, starting with a three-letter prefix that identifies the type of ULD. This prefix is followed by a unique 4 or 5-digit serial number to distinguish it from others of the same type. The last two or three characters designate the owner of the ULD (e.g. the airline).

Many different parties handle ULDs as they pass between airlines and airports around the world, so a system was needed to identify easily and quickly each ULD. Therefore, the International Air Transport Association (IATA) introduced a global standard system of identification. Accordingly, each ULD is assigned a unique ULD code, which is clearly visible on the relevant unit. By standardizing the system, all manufacturers, cargo handlers and airlines can now identify the ULD's classification and the owner at a glance.

The first three letters of a ULD code are perhaps the most important. They are used to identify the type, size and shape of the ULD. This information is vital in determining not only the type of cargo it can contain but also the aircraft it is compatible with.

The three-letter prefix works as follows:

1. The first letter represents the type of ULD
2. The second letter represents the base size of the ULD
3. The third letter represents the container's contour or the pallet's restraint system

A. TYPE

The first letter of the code's prefix describes the type of container:

| | | | |
|---|--|---|---|
| A | Certified aircraft container | N | Certified aircraft pallet net |
| B | Certified winged aircraft pallet | P | Certified aircraft pallet |
| D | Non-certified aircraft container | Q | Certified hardened aircraft container |
| F | Non-certified aircraft pallet | R | Thermal certified aircraft container |
| G | Non-certified aircraft pallet net | S | Certified multi-modal air/surface container |
| H | Certified horse stalls | U | Non-structural container (igloo) |
| J | Thermal non-structural igloo | V | Automobile transport equipment |
| K | Certified cattle stalls | W | Certified ULD for aircraft engine transport |
| L | Certified multi-contour aircraft container | X | Reserved for airline internal use |
| M | Thermal non-certified aircraft container | Y | Reserved for airline internal use |
| | | Z | Reserved for airline internal use |

B. BASE SIZE

The second letter of the code's prefix describes the base dimensions of the unit. The following codes are used for containers manufactured after 1 October 1990:

| | |
|---|--|
| A | 2235 x 3175 mm / 88 x 125 inch |
| B | 2235 x 2743 mm / 88 x 108 inch |
| G | 2438 x 6058 mm / 96 x 238.5 inch (20 ft) |
| K | 1534 x 1562 mm / 60.4 x 61.5 inch |
| L | 1534 x 3175 mm / 60.4 x 125 inch |
| M | 2438 x 3175 mm / 96 x 125 inch |
| N | 1562 x 2438 mm / 61.5 x 96 inch |
| P | 1198 x 1534 mm / 47 x 60.4 inch |
| Q | 1534 x 2438 mm / 60.4 x 96 inch |
| R | 2438 x 4978 mm / 96 x 196 inch (16 ft) |
| S | 1562 x 2235 mm / 61.5 x 88 inch |

C. CONTOUR

The third letter of the code's prefix describes the container's contour (shaped to fit in the plane's body) and, in the case of pallets and nets, the restraint system in which the unit is classified. The ULD contour is designed to maximize the cargo volume carried, and depends on its position in an aircraft (upper or lower deck). A summary of all contours can be found below:



Contour A

Width: 2438 mm / 96 in

Height: 2438 mm / 96 in

Type: Main Deck



Contour B

Width: 2438 mm / 96 in

Height: 2438 mm / 96 in

Type: Main Deck



Contour C

Width: 2337mm / 92 in

Height: 1626 mm / 64 in

Type: Lower Deck



Contour D

Width: 2438 mm / 96 in

Height: 2997 mm / 118 in

Type: Main Deck

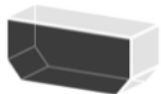


Contour E

Width: 2007 mm / 79 in

Height: 1626 mm / 64 in

Type: Lower Deck



Contour F

Width: 4064 mm / 160 in

Height: 1626 mm / 64 in

Type: Lower Deck



Contour G

Width: 2007 mm / 79 in

Height: 1143 mm / 45 in

Type: Lower Deck



Contour H

Width: 2438 mm / 96 in

Height: 1143 mm / 45 in

Type: Lower Deck

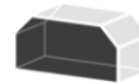


Contour J

Width: 2438 mm / 96 in

Height: 2438 mm / 96 in

Type: Main Deck



Contour K

Width: 3175 mm / 125 in

Height: 1626 mm / 64 in

Type: Main / Lower Deck



Contour L

Width: 2438 mm / 96 in

Height: 2946 mm / 116 in

Type: Main Deck



Contour M

Width: 2236 mm / 88 in

Height: 2286 mm / 90 in

Type: Main Deck



Contour X

Width: 2438 mm / 96 in

Height: 2997 mm / 118 in

Type: Main Deck



Contour Y

Width: 3175 mm / 125 in

Height: 2083 mm / 82 in

Type: Main Deck

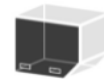


Contour Z

Width: 3175 mm / 125 in

Height: 2083 mm / 82 in

Type: Main Deck

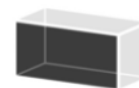


Contour N

Width: 2007 mm / 79 in

Height: 1626 mm / 64 in

Type: Lower Deck

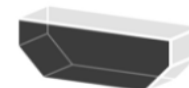


Contour P

Width: 3175 mm / 125 in

Height: 1626 mm / 64 in

Type: Lower Deck



Contour U

Width: 4724 mm / 186 in

Height: 1626 mm / 64 in

Type: Lower Deck



Contour V

Width: 2438 mm / 96 in

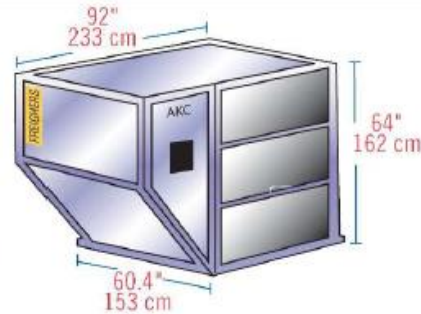
Height: 2438 mm / 96 in

Type: Main Deck

D. AIR FREIGHT CONTAINERS

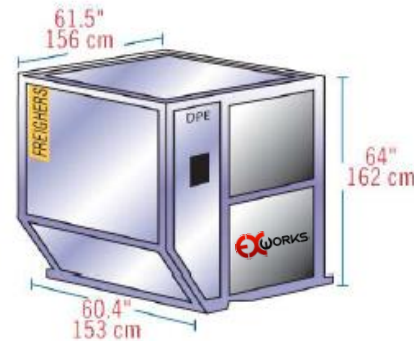
LD-1

IATA ULD Code: AKC Contoured Container
Also known as: AVC, AVD, AVK, AVJ
Forkable: AVY
Classification: LD-1
Suitable for: B747, B767, B777, MD-11
Internal volume: 4.8 m³ (169.5 Ft³)
Maximum gross weight: 1,588 Kg (3,501 Lb)



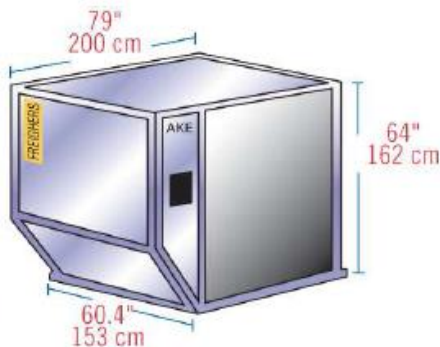
LD-2

IATA ULD Code: DPE Contoured Container
Also known as: APA, DPA
Forkable: DPN
Classification: LD-2
Suitable for: B767
Internal volume: 3.4 m³ (120 Ft³)
Maximum gross weight: 1,225 Kg (2701 Lb)



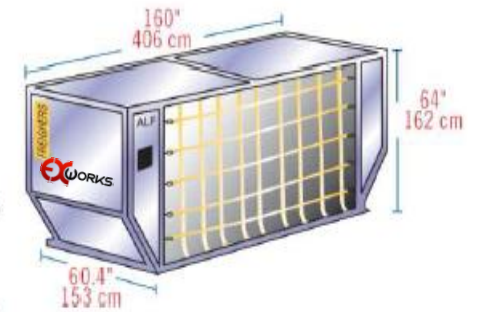
LD-3

IATA ULD Code: AKE Contoured Container
Also known as: AKE, AVA, AVB, AVC, AVK, DVA, DVE, DVP, XKS, XKG
Forkable: AKN, AVN, DKN, DVN, XKN
Classification: LD-3
Suitable for: A300, A310, A330, A340, B747, B767, B777, DC-10, MD-11, L1011
Internal volume: 4.3 m³ (151.8 Ft³)
Maximum gross weight: 1,588 Kg (3500 Lb)



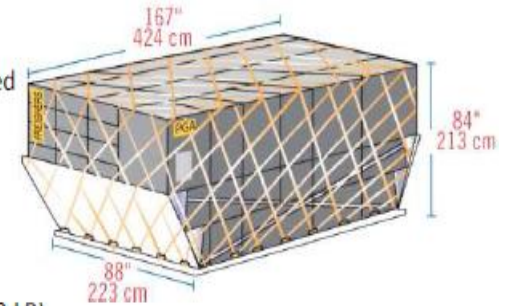
LD-6

IATA ULD Code: ALF Contoured Container
Also known as: AWD, AWF
Forkable: AWC
Classification: LD-6
Suitable for: A300, A310, A330, A340, B747, B777, DC-10, MD-11, L1011
Internal volume: 8.9 m³ (314.3 Ft³)
Maximum gross weight: 3,175 Kg (7,000 Lb)



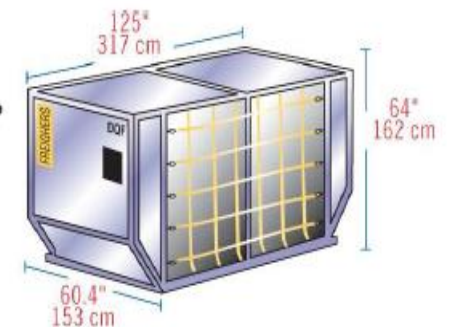
LD-7

IATA ULD Code: XAW P1P Pallet with fixed angle wings and net
Classification: LD-7
Suitable for: Wide body: All aircraft
Maximum volume with overhang: 14 m³ (494.3 Ft³)
Maximum gross weight: 5,000 Kg (11,023 LB)



LD-8

IATA ULD Code: DQF
Also known as: ALE, ALN, DEL, DLF, DQP, MQP
Classification: LD-8
Suitable for: B767
Internal volume: 6.85 m³ (241.9 Ft³)
Maximum gross weight: 2,450 Kg (5,401 Lb)



INSULATED LD-3

IATA ULD Code: RKN

Classification: LD-3

Suitable for: A300, A310, A330, A340, B747, B767, B777, DC-10, MD-11, L1011

Internal volume: 3 m³ (105.9 Ft³)

Maximum gross weight: 1,588 Kg (3501 Lb)

Temperature control range: -20C to +20C



LD-4

IATA ULD Code: ALP Rectangular Container

Also known as: ALD, AWD, AWZ, DLP

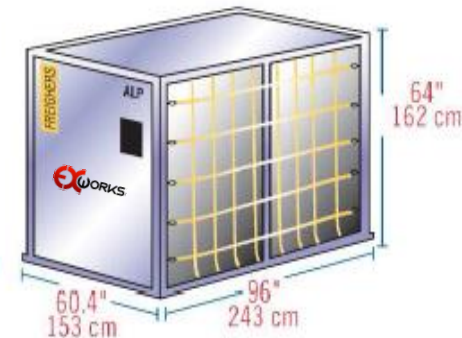
Forkable: ALB, ALC, AWB, AWC

Classification: LD-4

Suitable for: B767, B777

Internal volume: 5.7 m³ (201.2 Ft³)

Maximum gross weight: 2,449 Kg (5399 Lb)



88" PALLET

IATA ULD Code: P1P

Classification: 88" Pallet with net

Suitable for: B747, B767, B777, DC-10

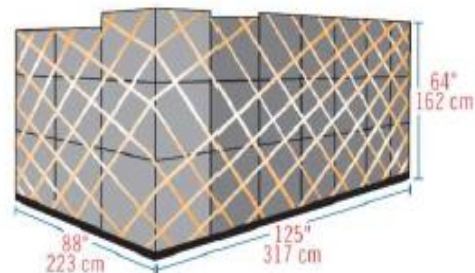
Maximum volume: 11.9 m³ (420.2 Ft³)

Maximum gross weight:

747/DC-10: 6,033 Kg (13,300 Lb)

767: 5,103 Kg (11,250 Lb)

777/DC: 4,626 Kg (10,199 Lb)



LD-9

IATA ULD Code: AAP Enclosed Pallet on P1P base

Also known as: AA2, XAG, XAV

Classification: LD-9

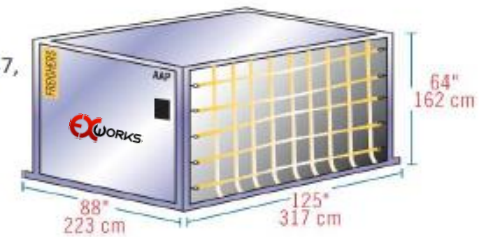
Suitable for: A300, A310, A330, A340, B747, B767, DC-10, MD-11, L1011

Internal volume: 9.1 m³ (321.3 Ft³)

Maximum gross weight:

4,624 Kg (10,194 Lb) lower deck

6,000 Kg (13,227 Lb) main deck



LD-11

IATA ULD Code: ALP Rectangular Container

Also known as: ALD, AW2, AWB, AWD, AWZ, DLP, DWB, MWB

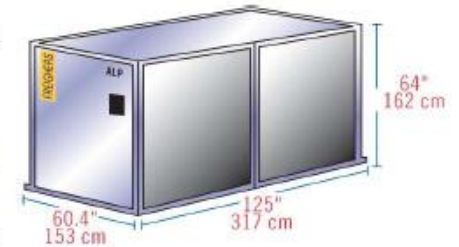
Refrigerated version: RWB, RWD, RWZ

Classification: LD-11

Suitable for: A300, A310, A330, A340, B747, B777, DC-10, MD-11, L1011

Internal volume: 7.2 m³ (254.2 Ft³)

Maximum gross weight: 3,176 Kg (7,002 Lb)



A-2

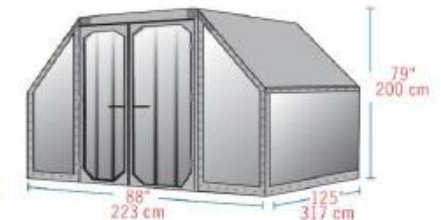
IATA ULD Code: DAA

Classification: A-2

Suitable for: B747, B747F, DC8, DC10, A300/F

Internal volume: 12.6 m³ (444.9 Ft³)

Maximum gross weight: 6,033 Kg (13,300 Lb)



AQ6

IATA ULD Code: AMA Rectangular Container on P6P Base

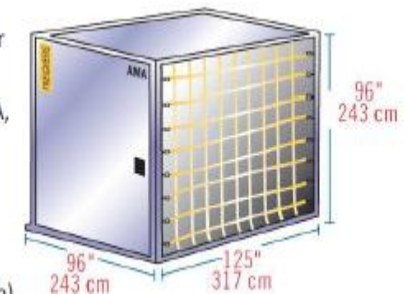
Also known as: AMF, AMG, AMK, AMP, AQA, AQD, AQ6

Classification: M-1

Suitable for: B747F, B747Combi

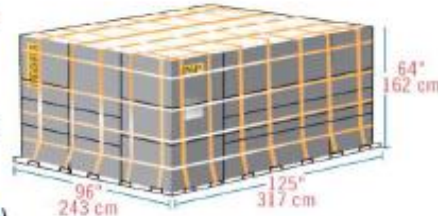
Maximum volume: 17.5m³ (617.9 Ft³)

Maximum gross weight: 6,804 Kg (15,000 Lb)



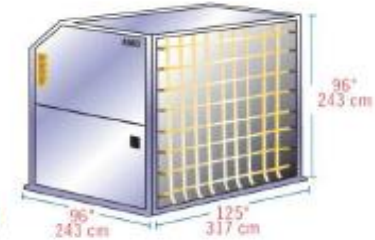
96" PALLET

IATA ULD Code: P6P 10Ft flat pallet with net
Also known as: P6A, P6C, P6Q, PMA, PMC, PMP, PQP
Classification: LD-9
Suitable for: A300, A310, A330, A340, B747, B767, B777, DC-10, MD-11, L1011
Maximum volume: 21.2 m³ (748.6 Ft³)
Maximum gross weight: 6,804 Kg (15,000 Lb)



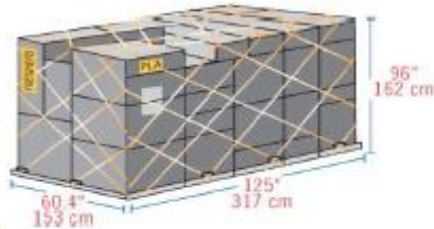
AQ7

IATA ULD Code: AMD Contoured Container on P6P Base
Also known as: AQA, AQ7
Classification: M1H
Suitable for: B747F, B747Combi
Internal volume: 19.9 m³ (702.7 Ft³)
Maximum gross weight: 6,800 Kg (14,991 Lb)



HALF PALLET

IATA ULD Code: PLA half pallet with net
Also known as: PLB, FLA, P9A, P9B, P9P, P9R, P9S
Classification: HP
Suitable for: Lower deck B747, B777
Main deck: B707F, B727F, B737F
Maximum volume: 7.2 m³ (254.2 Ft³)
Maximum gross weight: 3,175 Kg (7,000 Lb)



M-6

IATA ULD Code: AGA 20Ft Box Container
Also known as: ASE
Classification: M-6
Suitable for: B747F, B747Combi
Internal volume: 33 m³ (1,165.3 Ft³)
Maximum gross weight: 11,340 Kg (25,000 Lb)



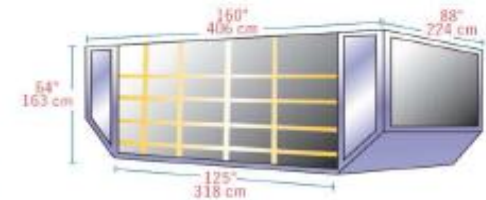
16 FT PALLET

IATA ULD Code: PRA 16Ft flat pallet with net
Also known as: PMA, P4A, P4M, PZA
Classification: MDP
Suitable for: B747, B747Combi
Maximum volume: 26.8 m³ (946.4 Ft³)
Maximum gross weight: 11,300 Kg (24,912 Lb)



LD-26

IATA ULD Code: AAF
Classification: LD-26
Suitable for: B747, B777, DC-10
Maximum gross weight:
747/DC-10: 6,033 Kg (13,300 Lb)
777/DC-10: 4,626 Kg (10,199 Lb)



20 FT PALLET

IATA ULD Code: PGA 20Ft flat pallet with net
Also known as: PGA, PGE, PGF, PSA, PSG, P7A, P7E, P7F, P7G
Classification: M-6
Suitable for: B747F, B747Combi
Maximum volume: 33.2 m³ (1,172.4 Ft³)
Maximum gross weight: 11,340 Kg (25,000 Lb)



LD-29

IATA ULD Code: AAU Contoured Container on P1P Base
Classification: LD-29
Suitable for: B747
Internal volume: 14.2 m³ (501.4 Ft³)
Maximum gross weight: 6,033 Kg (13,300 Lb)

